

WHĀNAU MERCY MINISTRIES

HUI WHĀNAU 2025

DAY 2 - 14 October 2025

Te Wāhanga Atawhai Mercy Conference Centre
Thorndon, Wellington



HUI WHĀNAU 2025

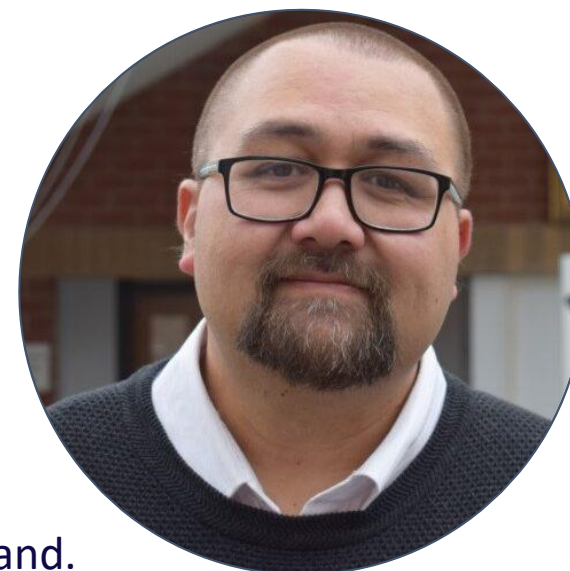
He Wā Whakamaumahara

a space to experience, encounter,
and engage in Mercy.



Manuel Beazley

Keynote speaker



Manuel is the Vicar for Māori in the Diocese of Auckland.
He sits on the diocesan Lead Team and the NZCBC Rōpū Māori.
Manuel recently attended sessions of the global Synod on Synodality in Rome.

UNPACKING WHĀNAU MERCY VALUES THROUGH THE LENS OF MĀORI SPIRITUALITY



WHĀNAU
MERCY
MINISTRIES



ATUA



TANGATA

WHENUA



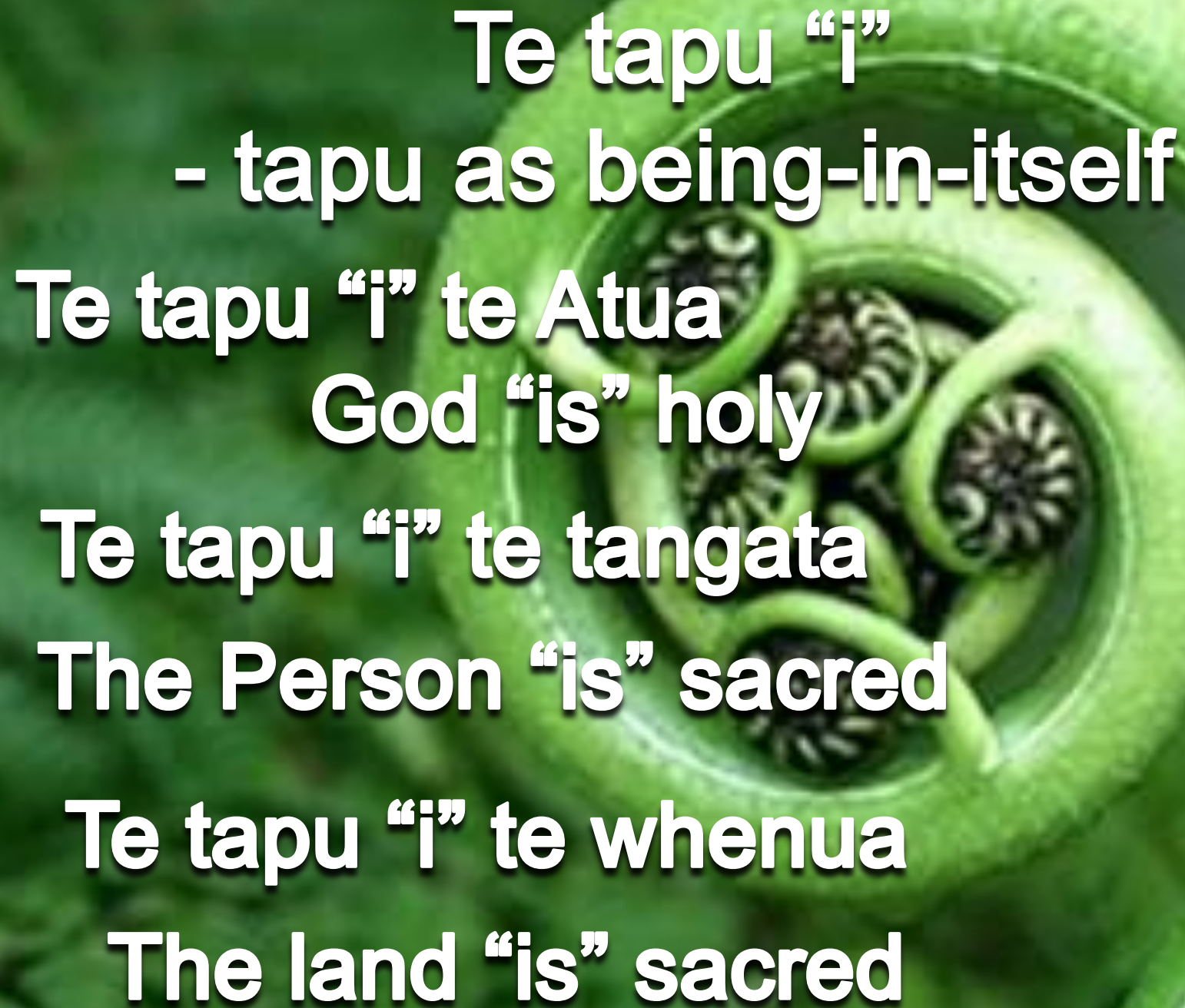
TAPU

Set apart

Holy

Sacred





**Te tapu “i”
- tapu as being-in-itself**

**Te tapu “i” te Atua
God “is” holy**

**Te tapu “i” te tangata
The Person “is” sacred**

**Te tapu “i” te whenua
The land “is” sacred**



Te tapu “o”

- tapu as being-in-relationship

Te tapu “o” te Atua

That “of” God is sacred

Te tapu “o” te tangata

That “of” a person is sacred

Te tapu “o” te whenua

That “of” the land is sacred

Whanaungatanga
Aroha
Kaitiakitanga





Whanaungatanga

How are our relational spaces (hui, emails, meetings etc) infused with the awareness of tapu?

Aroha

How do we treat one another as bearers of divine dignity?

Kaitiakitanga

How do we protect the tapu of cultural and spiritual symbols?

A photograph of a whale breaching the ocean surface. The whale's tail fluke is raised high, creating a large splash of water. The background is a clear blue sky and a deep blue ocean.

MANA

Where there is Tapu,
there is Mana



MANA

Authority
Dignity
Prestige

MANA

A photograph of a whale breaching the ocean surface. The whale's large, dark pectoral fins are fully extended, creating a wide, flat canopy over the water. A thick column of water is being pushed up from the whale's body, and a massive splash of water is erupting from the point of breaching, cascading down and outwards. The background is a clear, bright blue sky and a deep blue ocean.

Tapu is the potential
for power

MANA

A photograph of a whale breaching the ocean surface. The whale's tail fluke is raised high, and water is splashing around it. The background is a clear blue sky and a blue ocean.

Mana is the actual
power

A photograph of a whale breaching the ocean surface. The whale's tail fluke is raised high, creating a large splash of water. The background is a clear blue sky and a deep blue ocean.

MANA

Mana is Tapu in action



Mana Atua

Mana Tangata

Mana Whenua



Whanaungatanga

Do our systems (e.g. HR, pastoral care, leadership structures) reflect the mana of relational connection?

Aroha

How do we express aroha in ways that protect and enhance mana—not just kindness, but deep respect?

Kaitiakitanga

How do we recognise the mana of the whenua, taonga, and resources entrusted to us?



PONO

Truth

Integrity

Fidelity



TIKA

Right Order

Just

Correct



AROHĀ

Love

Communion

Action

Whanaungatanga

A photograph of three young boys in a grassy field, completely covered in mud. They are laughing and looking at each other. The boy on the right is holding a red cup. The background is a soft-focus green field.

How do we ensure that everyone's voice is heard and valued?



Kaitiakitanga

How do we ensure intergenerational justice in our stewardship?



Manaakitanga

What value do you place on hospitality?

What does that look/feel/sound like?

A close-up photograph of two hands clasped together in a supportive grip. The hands are positioned in the center of the frame, with fingers interlaced. The lighting is soft and focused on the hands, creating a sense of warmth and connection. The background is dark and out of focus.

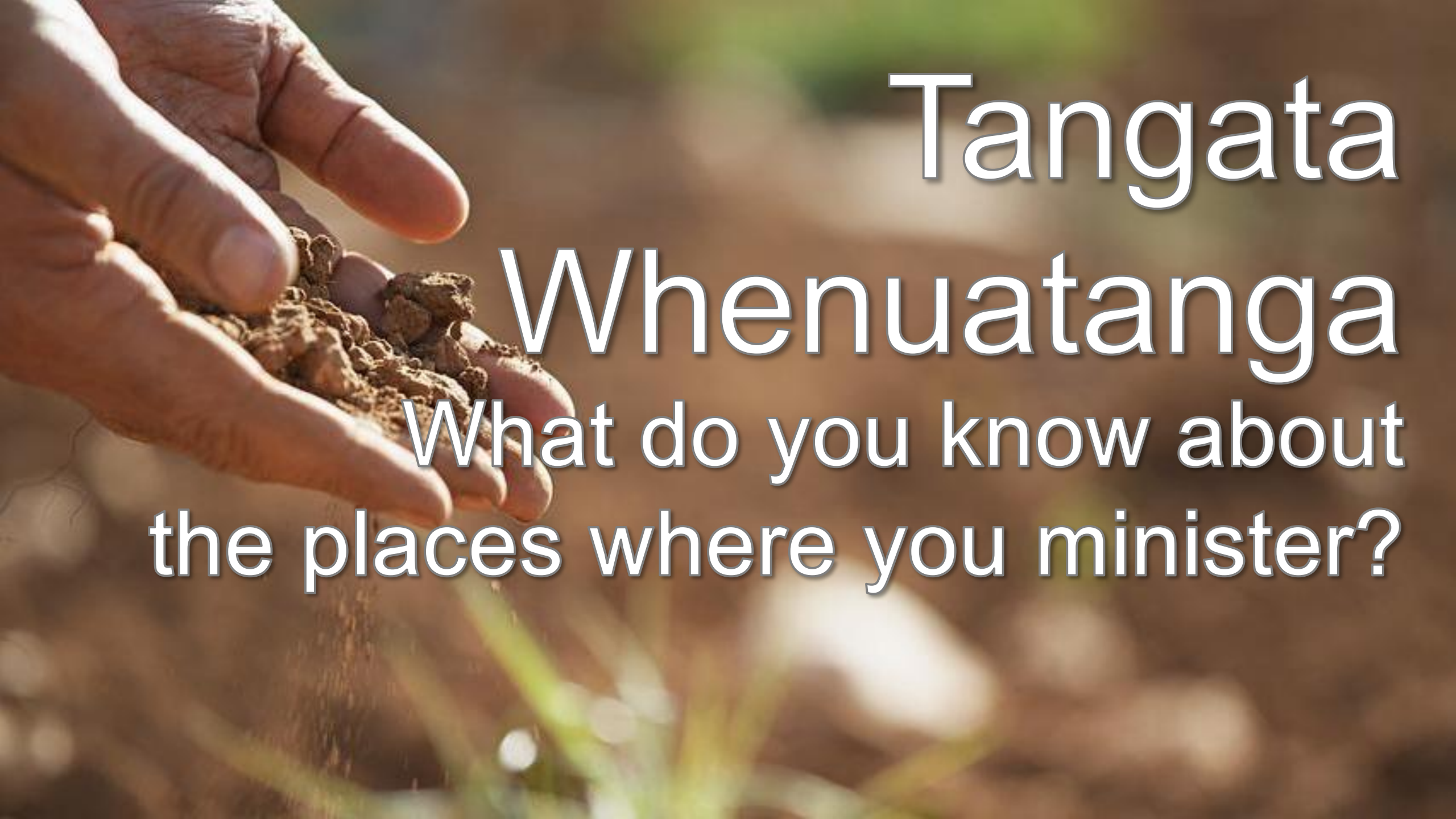
Ātawhaitanga

How does 'Atawhai' invite us to move from feeling compassion to embodying it—through action, relationship, and responsibility?



Kotahitanga

What does kotahitanga ask of us
when unity feels difficult?



Tangata

Whenuatanga

What do you know about
the places where you minister?



Panekiretanga

In what ways do we see our ministries as sacred responsibility—honouring those who came before and uplifting those yet to come.

HUI WHĀNAU 2025

He Wā Whakamaumahara

a space to experience, encounter,
and engage in Mercy.





**WHĀNAU
MERCY
MINISTRIES**

Te Ngākau Atawhai – Heart of Mercy: In Aotearoa, the Mercy Cross, central to Catherine McAuley’s spirituality, is supported by a pair of koru. The koru represent the unfolding of new life and link our Mercy story to the spirituality of Māori and the ancient lore of this land

Whānau Mercy Ministries, a Ministerial Public Juridic Person (MPJP) under Canon Law.

© Whānau Mercy Ministries.

