

WHĀNAU MERCY MINISTRIES

Hui Whānau 2025

He Wā Whakamaumahara



WHĀNAU
MERCY
MINISTRIES



Acknowledgements & Thanks

We extend our heartfelt gratitude to all who have contributed to Hui Whānau 2025:

- Our speakers and facilitators who have gifted us with their wisdom, insights, and inspiration.
- Our organising rōpū who have worked with dedication and care to bring this gathering together.
- Our delegates - each of you - for your presence, participation, and the stories you will share.

Mihi Whakatau: Symbolic Items

As part of our mihi whakatau, we warmly invite delegates to bring a small symbolic item to place on the table of blessing.

This could be:

- Something that represents your ministry or community.
- A taonga that holds personal meaning.
- A symbol of your journey or story.

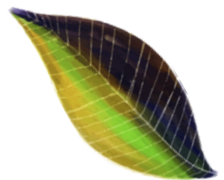
Together, these items will form a shared centrepiece of our gathering - a sign of our collective stories and the blessings we carry into Hui Whānau 2025.

Please keep items small enough to be placed on a shared table and easy to carry home afterwards.

Manaia Attribution:

The manaia tohu was designed by Charmaine Love of DHC Events for Ngā Whaea Atawhai o Aotearoa Tiaki Manatū Sisters of Mercy Ministries, New Zealand Trust. The Manaia is a mythical Māori creature with the head of a bird, body of a man and tail of a fish. The Manaia reflects Catherine McAuley's unique qualities to be present in many different ways and to adapt to the need at different times.

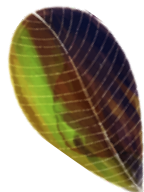




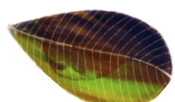
Karakia

We gather as one whānau, drawn from around Aotearoa,
To encounter Mercy anew, to experience its depth,
And to expand its reach in our ministries, our communities, and our hearts.

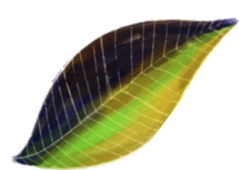
We give thanks for the legacy of Catherine McAuley,
Whose vision of compassion and courage continues to guide us.
May her spirit walk among us as we seek to serve with aroha, whanaungatanga and kaitiakitanga
To empower the vulnerable, and to bring hope where there is need.



Bless this Hui Whānau,
Let it be a sacred space of connection, reflection, and renewal.
May our conversations be rich with wisdom,
Our prayers filled with grace,
And our actions inspired by Mercy.



Unite us in mission,
Strengthen us in faith,
And send us forth as bearers of your love,
So that Mercy may flourish in this land,
From the maunga to the moana,
In every home, every heart, every ministry.



Āmene.



Mihi Whakatau

A welcome of Mercy to you.

Ko te tīmatanga o te whakāro nui, ko te wehi ki te Atua.

**Ki ngā wāhi tapu e hora nei, ngā maunga, ngā Awa, ngā moana, te whenua i raro nei,
kei te mihi.**

**Ki a koutou kua wheturangitia, haere ki ngā ringa atawhai o tō tātou Ariki, a Hehu
Karaiti, moe mai ra.**

**Huri noa ki a tātou. E ngā reo, e ngā waka, e ngā mana, piki mai, kake mai, whakatau
mai ki te whānau Atawhai.**

Tēnā koutou kātoa i raro i te aroha kore mutu o te Atua.

He mihi mahana, he mihi tautoko, he mihi atawhai tēnei.

Whakatau mai.

The beginning of all wisdom is to respect with awe, the wonder of our Creator's creation.

We acknowledge the sacred spaces and places, the mountains, the rivers, the oceans, and the
land beneath our feet.

To those who have become as stars in the heavens, farewell to the merciful hand of God, rest.

To us living in the light of the world, the many voices, histories and relationships, we
acknowledge you.

Come, step up, be with us in this, the Family of Mercy.

We welcome you in God's generous love.

A warm welcome, a supporting welcome, a welcome of mercy to you.



Welcome

Kia ora tatou, e te iwi Atawhai

I am looking forward to our first-ever hui whānau, or gathering of the Mercy family, on 13 and 14 October in Wellington. The hui will serve three objectives:

Whānaungatanga

The gathering is first and foremost an opportunity for Mercy directors and staff to meet each other, share their perspectives on Mercy governance and leadership and strengthen the sense of being a family of Mercy. Accordingly, we have designed a programme with considerable opportunity for participants to talk with and listen to each other and to participate in the work of shaping our priorities and commitments, in quite tangible ways.

Synodality (collective discernment and leadership)

Governing or working in a Mercy ministry involves an active engagement with the Mercy story and the charism founded by Catherine McAuley. It is also about exercising leadership of that charism in its contemporary form, within an officially recognised and authorised church structure. To equip ourselves for that task requires us to grapple collaboratively with the implications for what our ministries do and how they do it. This is synodality - the newly-reclaimed model of church leadership, in action – collective, participative, transparent, accountable, courageous.

Mission with impact

Mercy is always a work in progress, open to new insights and inspiration for the mahi that is ours to do. We want to throw open the conversation about new invitations and new opportunities for mission to all directors and staff – this is our ‘widening the tent pegs’ priority, at a nuts and bolts level.

Our hui will run for 24 hours over two days (including some sleep!). It will be fast-paced, with engaging presenters, timely topics and plenty of opportunity for participants to connect, chat and contribute their insights and ideas.

I am grateful that you have chosen to come to the hui and to bring your wisdom and inspiration to the task of shaping Mercy’s future in Aotearoa New Zealand. You are in for a memorable, stimulating and enjoyable experience.

See you soon,

Ngā mihi

Gerald Scanlan

Trustee & Chair | Whānau Mercy Ministries Trust



Schedule

Day 1 - Registration and evening programme.

Venue - Spence Room Level 1 Atura Hotel.

Time	Programme
4.00 – 4.30pm	Registrations
4.30 – 5.00pm	Mihi whakatau & laying of symbolic items
5.00 – 6.00pm	Pre-dinner speaker: Adjunct Professor Susan Pascoe (via Zoom)
6.00 – 7.00pm	Pre-dinner drinks & networking
7.00 – 8.00pm	Evening Dinner
8.00 – 9.00pm	After-dinner speaker: Manuel Beazley, Vicar for Māori, Auckland Diocese
9.00pm approx.	Formalities close

Day 2 - Main Programme

Time	Programme
8.00 – 8.25am	Mihi whakatau & welcome to Day 2
8.25 – 8.45am	Kai/Inu (tea & coffee)
8.45 – 9.30am	Opening Session: Apostolic Nuncio Gábor Pintér
9.30 – 9.45am	Mercy Moments
9.45 – 10.30am	Morning Session: Manuel Beazley, Vicar for Māori, Auckland Diocese
10.30 – 11.00am	Morning Tea
11.00 – 12.30pm	Mid-Morning Concurrent Workshops <ul style="list-style-type: none"> • Te Tiriti – Led by Bill Takerei & Phil Alexander Crawford • Care for Our Common Home – Led by Charlotte Cummings & James Beck
12.30 – 1.30pm	Lunch & Mercy Quiz
1.30 – 1.45pm	Waiata session
1.45 – 2.00pm	Mercy Moments
2.00 – 3.30pm	World Café – Led by Judy Whiteman
3.30 – 4.00pm	Reflection & Poroporoaki
4.00pm	Afternoon Tea

Speakers

In every voice there is a story, and in every story an invitation. The speakers at Hui Whānau bring with them not only knowledge and experience, but also the gift of perspective shaped by Mercy. Their presence encourages us to listen with open hearts and to recognise how the Spirit moves among us.



Susan Pascoe AM

Susan Pascoe AM is Adjunct Professor at the University of Western Australia. She Chairs the Australian Council for International Development and the Community Director's Council. She was a member of the Vatican's Methodology Commission for the Synod on Synodality and a facilitator at the Synod Assemblies in Rome in 2023 and 2024. She is a Trustee of St John of God Health, a Board member of Mercy Health.

Prof Pascoe was the inaugural Commissioner for the Australian Charities and Not-for-profits Commission from 2012-17. Prior to this appointment, she was Victorian State Services Authority Commissioner. She was one of three Commissioners for the 2009 Royal Commission into Black Saturday Bushfires. Her earlier career was in education where she served as Director of Catholic Education in the Archdiocese of Melbourne, and CEO and Chair of the Catholic Education Commission of Victoria.

Prof Pascoe is a Fellow of the Australian Institute of Company Directors and the Australian College of Educators. She was appointed a member of the Order of Australia in 2007; awarded the Leadership in Government Award in 2016 for her outstanding contribution to public administration in Australia; and awarded an honorary doctorate from ACU in 2024. She is currently leading an international project into lay governance.



Archbishop Gábor Pintér

Nuncio Gábor Pintér. Before taking up his appointment as Apostolic Nuncio (representative of the Holy See) here in Aotearoa, Archbishop Pintér was the Apostolic Nuncio to Honduras. He was born in Kunszentmarton, Hungary, in 1964, and ordained as a Catholic priest in June 1988. He has a PhD in Theology and a PhD in Canon Law, and speaks Hungarian, Italian, English, German, French, Spanish, Russian, Swedish, and Haitian Creole.



Manuel Beazley

Manuel Beazley is the Vicar for Māori in the diocese of Auckland. He sits on the diocesan Lead Team and the NZCBC Rōpū Māori. His role of Vicar for Māori is to be a link between the bishop and the Māori Catholic faithful in the diocese; to provide pastoral care to the Māori Catholic community of the diocese; to support parishes, schools and other faith communities of the diocese to develop their ministry to and with Māori and to support diocesan departments and agencies. Manuel recently attended sessions of the global Synod on Synodality in Rome.



Bill Takerei

Bill Takerei is Chief Executive Officer of Te Waipuna Puawai. Bill has a wealth of experience from previous roles at Otago Network Action Committee Charitable Trust (ONAC), Otago Boards' Forum Incorporated, Poutiri Trust and Hapai Te Hauora Tapui Ltd. He has a demonstrated history of working in the management consulting industry. Skilled in Nonprofit Organizations, Coaching, Entrepreneurship, Team Building, and Public Speaking.



Philip Alexander-Crawford

Phil Alexander-Crawford (Te Whiu, Ngāti Hine, Ngāti Rēhia, Ngāpuhi) Chief Executive Officer of Hango-Ara-Rau. Highly experienced leader of transformation, previously Director of Te Pae Tawhiti – Māori Equity Partnership at Te Pūkenga. Has held senior leadership roles in the vocational education sector, including Chief Executive of Te Matarau Education Trust, General Manager Education for the Ngāti wai Trust Board and Director of Development for Tai Tokerau Wānanga (NorthTec). He is a current board member of Whānau Mercy Ministries Trust.





Charlotte Cummings

Charlotte Cummings is a current Trustee of Whānau Mercy Ministries. Over 2024/5 she has participated in the Mercy Emerging Leaders Fellowship, delivering a project entitled: ‘Mercy Governance Approaches to Caring for Our Common Home: A Reflective and Practical Guide for Mercy Boards Responding to the Call of Laudato Si’’. Charlotte is passionate about the future of Mercy in Aotearoa – particularly how we apply our Mercy values to the issue of climate change, and how we continue our bias towards supporting those who are most vulnerable in our society.



James Beck

James Beck leads A Rocha’s Eco Church (ecochurch.org.nz) movement, which is a network of church communities across Aotearoa who are actively caring for God’s earth as an integral part of their mission. James has a long history of leadership in faith-based community development and social service agencies. James is also the Associate Pastor of The River Opāwaho, a church based in Ōtautahi.



Workshop information

On Day 1, when you register, you'll be invited to indicate your preferred workshop on the registration sheets.

Te Tiriti – Catherine Room, Mercy Conference Centre

Facilitators: [Bill Takerei](#) & [Phillip Alexander-Crawford](#)



Title: Ka haere tonu te hikoi Atawhai - The Mercy journey continues

Whānau Mercy Ministries has a commitment to te Tiriti enshrined in its approved Statement of Purpose. Having a Catholic entity with this commitment in a foundational document could be unique! As well as celebrating this, as a whānau we are on a journey of understanding and implementation. This workshop is a defining step on the Hikoi Atawhai as Whānau Mercy endeavours to find ways to give effect to our shared commitment to te Tiriti.



Together, we will explore elements of the Hikoi, reaching back to pre-Tiriti times and the subsequent call from wahine Māori that brought Wāhine Tapu – Ngā Whaea Atawhai – on a hikoi of faith to Aotearoa. The journey didn't end there, of course, so the discussion will focus us, te Whānau o Mercy, as we are called deeper into a similar hikoi of faith.

Beginning with our turanga, our foundations in this commitment - our primary task will be to explore what a te Tiriti commitment might look, sound, and feel like at all levels of our whānau, today, tomorrow and into the future.

Care for our Common Home – Julia Dickson Room, Mercy Conference Centre

Facilitators: [Charlotte Cummings](#) & [James Beck](#)



Title: Responding Courageously to the call to Care for our Common Home

Mercy ministries around the world carry a sacred responsibility: to lead with integrity, vision, and hearts attuned to the needs of our time. Among the most urgent of these needs is the call to care for our Common Home — a call that resounds through Pope Francis' *Laudato Si'* and echoes deeply within the charism of Mercy.

In this workshop, James Beck and Charlotte Cummings will guide you through the rich concept of integral ecology and explore the distinctive 'Mercy Way' of answering both the cry of Earth and the cry of the poor. Together, we will reflect, share, and discover practical pathways that integrate faith, justice, and creation care.

You will come away inspired to think deeply and act courageously in the context of your ministry here in Aotearoa.

World Café

Facilitator: Judy Whiteman

Theme: *How do we widen the tent pegs? What are the implications for Whānau Mercy Ministries? Where might Mercy be calling us?*

What is the World Café?

The World Café is a creative way of hosting group conversations that encourage everyone's voice to be heard. Participants move between small tables, sharing ideas and building on each other's insights. Notes, doodles, and key thoughts are recorded on table flipcharts so that collective wisdom can emerge. The aim is to discover connections, deepen questions, and surface new possibilities together.

Session timing

2.00pm – Welcome & Introduction (10 mins)

2.10pm – Round 1 (25 mins)

2.35pm – Round 2 (15 mins)

2.50pm – Round 3 (10 mins)

3.00pm – Report Back (15 mins)

3.30pm – Whakamutu



Delegate Information

We want your time at Hui Whānau to be welcoming, safe, and enriching. This page brings together key information to help you prepare for the gathering and know what to expect. Here you'll find details on who to contact for assistance, health and safety guidelines, accessibility, and dietary needs. Please take a moment to read through so you can feel at ease and fully present during our time together.

Contacts & Help

If you need assistance prior to the event please contact comms@whanaumercy.nz or call the office (+64) 04 213 6065.

Health & Safety / Accessibility

Emergency exits and procedures will be explained at each venue.

If you require assistance with accessibility or have any health needs, please comms@whanaumercy.nz or call the office (+64) 04 213 6065.

Dietary Requirements

Special dietary requirements provided at registration have been passed on to the caterers. If you have any concerns, please speak to the team at the registration desk.

Wi-Fi / Technology

Wi-Fi access will be available at both the Atura Hotel and the Mercy Conference Centre. Login details will be available at the registration desk.

Feedback & Reflection

Delegates will be invited to provide feedback at the close of the hui. Your reflections will help shape future gatherings of Whānau Mercy Ministries.



Venues and logistics

Day 1 – Monday 13 October 2025

Venue: Atura Hotel 24 Hawkestone Street, Thorndon Wellington.

2.00pm onwards - Check in for overnight delegates

4.00pm onwards - Registration/Mihi Whakatau - Spence Room/Mansfield Room, Level 1, Atura Hotel,

Day 2 – Tuesday 14 October 2025

Venue: Catherine Room, Mercy Conference Centre, 15 Guildford Terrace, Thorndon, Wellington

8.00am – 4.00pm - Main conference

Accommodation – Atura Hotel

Check-in: From 2.00pm on Day 1

Check-out: Standard time 10.00am (unless arranged otherwise)

Facilities: On-site restaurant and bar, breakfast available

We will be in touch closer to the event with final accommodation updates.

Walking Between Venues

The Atura Hotel (24 Hawkestone St) and Mercy Conference Centre (Guildford Tce) are about a 10 minute walk apart.

Parking

Overnight parking is available at the Atura Hotel on a first come first served basis and costs \$26 per night. Other parking is available as shown on the map below. On street parking is also available and charged at the Wellington city rate.

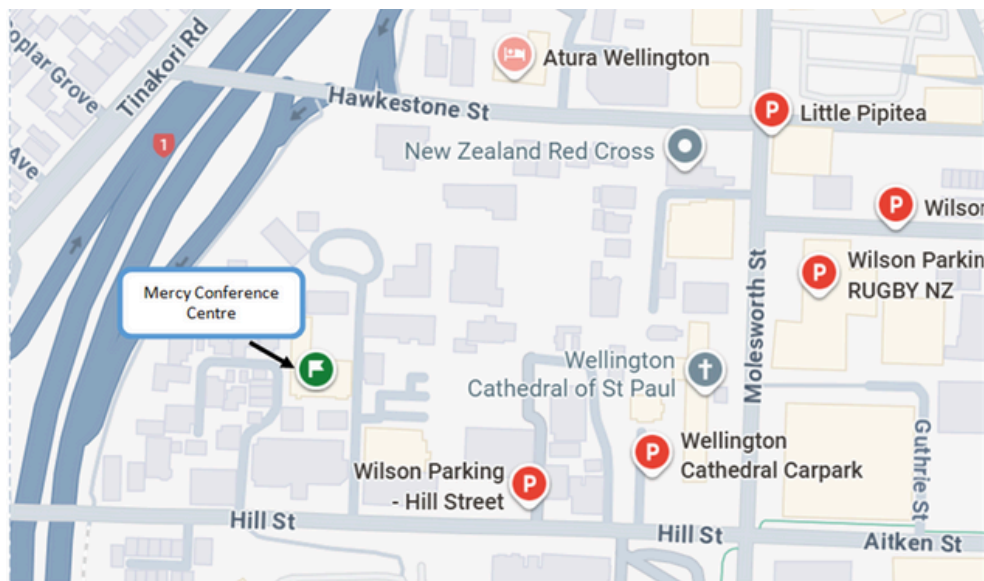


Venue Map



- Some Parking Available
St Marys College Bottom Courts
- Accommodation
Atura Wellington
- Venue
Mercy Conference Centre

Other Carparking Options



Songs for gathering

Below is a list of songs we'll be sharing during Hui Whānau.

Click on each title to open a YouTube link and listen.

E te Ariki (Whānau)

E te Ariki	Lord
Whakarongo mai ra ki a mātou	Listen to us
E te Ariki	Lord
Titiro mai ra ki a mātou	Look at us
Tēnei matou	This is us
O tamariki	Your children
E whakapono ana mātou	We believe
Ki a koe Aue! Aue!	In you
Te Matua te Tamaiti	The Father, the Son and
Wairua tapu e	the Holy Spirit

Mō Maria

Mō Maria aianeī	For Mary now
O tātou waiata	Our songs
Kia kaha rā tātou	Let us be strong
Kia nui te aroha	Let there be great love
Mō maria aianeī	For Mary now
O tātou waiata	Our songs
Kia kaha rā tātou	Let us be strong
Kia nui te aroha	Let there be great love
Aroha ki te Atua	Love God
Aroha ki a Maria	Love Mary
I te Rangī,	In heaven
te whenua	And on earth
āke tonu, āke tonu	For ever and ever

Te Aroha

Te Aroha

It is love

Te whakapono

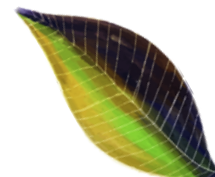
It is faith

Me te rangimārie

It is peace

Tātou, tātou e

For us all

**Te Hokinga Mai**

Tangi a te ruru

The cry of the morepork

kei te hokihoki mai e

keeps coming back to me.

E whaka-wherowhero

It is hooting out there

i te pūtahitanga.

where the paths meet.

Nāku nei rā koe

I was the one

I tuku kia haere.

who allowed you to go.

Tēra puritia iho

It was curbed,

Nui rawa te aroha e.

my deep love for you

Te hokinga mai,

But now the formal return home.

Tēnā koutou

Greetings to you all,

Tangi ana te ngākau

How my heart weeps

i te aroha

with affection.

Tū tonu rā te mana

Still standing tall is the prestige,

te ihi o ngā tūpuna

and power of the ancestors

kua wehea atu rā

who have passed on, and who are now

Mauria mai te mauri tangata

bringing back the true spirit of the people

hei oranga mo te mōrehu

to help heal the remnant

Tangi mōkai nei,

crying like lost souls,

E rapu ana i te ara tika

while searching for the true path

Mō tātou kātoa.

for us all.

Te hokinga mai,

The Return Here of our artworks!

Te hokinga mai

The Return Here of our prestige!

Tū tangata tonu!

We people can stand tall again!

